

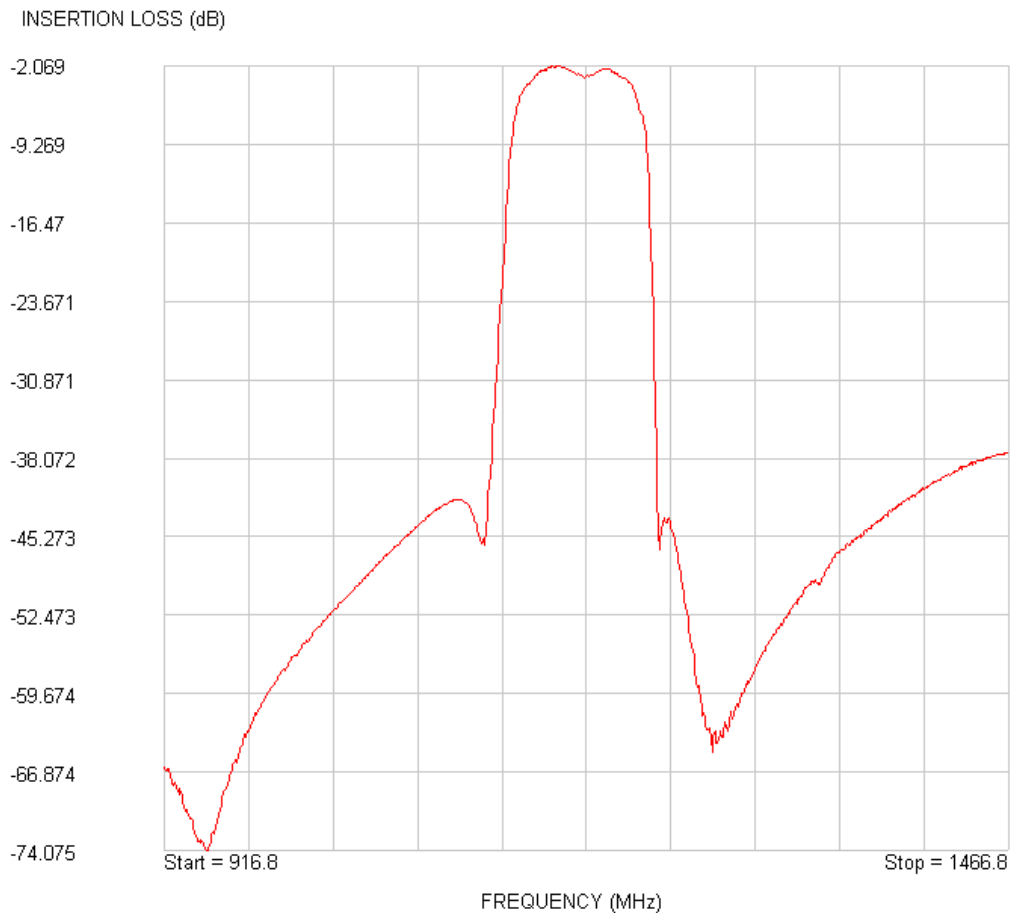
1191.8 MHz SAW Filter

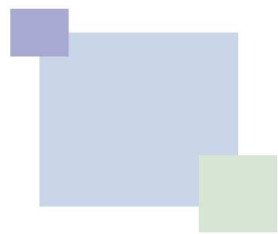
188891-101

SAW PRODUCTS

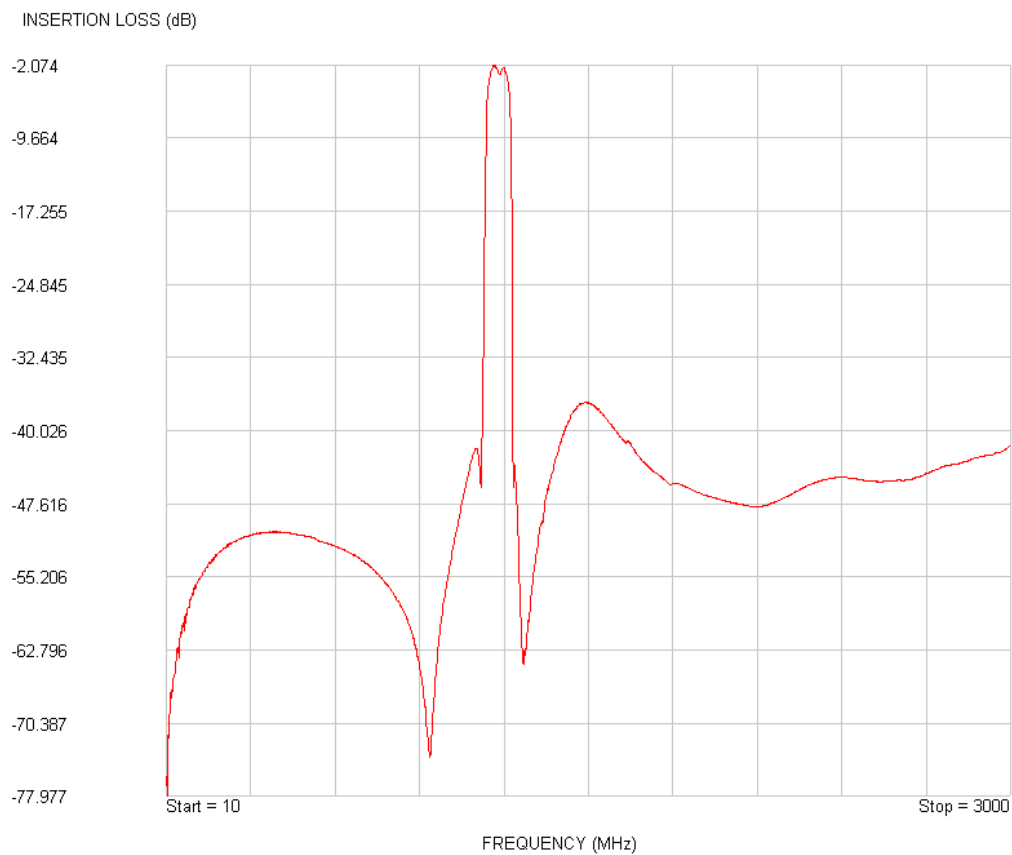
Parameter	Unit	Min	Typ	Max
Centre Frequency, f_0	MHz		1191.8	
Passband Insertion Loss, IL	dB		3.5	4.5
Passband 2.0dB bandwidth	MHz	55	70	
Amplitude Ripple	dB p-p		.8	1.2
Out-Of-Band Attenuation				
10 – 1040MHz	dB	40	48	
1040 – 1126MHz		30	35	
1256 – 1345MHz		38	43	
1345 – 1650MHz		31	36	
1650 – 2100MHz		35	40	
2100 – 3000MHz		35	40	
Group Delay Ripple	ns p-p		15	27
Operating Temperature Range	°C	-40		85
Input Impedance (single ended)	Ω	50		
Output Impedance (single ended)	Ω	50		
Impedance Matching		See matching circuit detail		
Package	mm	SMT 3.8x3.8X1.3		

Narrow Band Performance



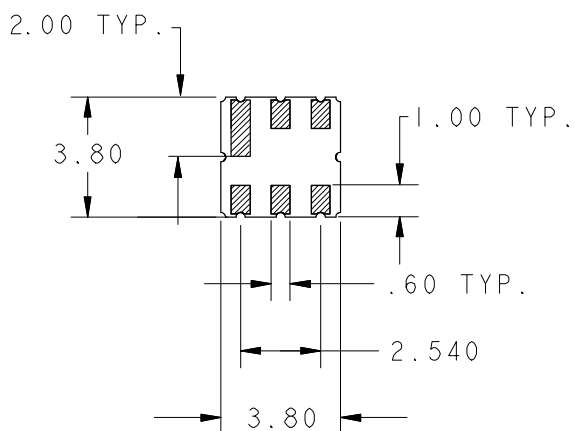
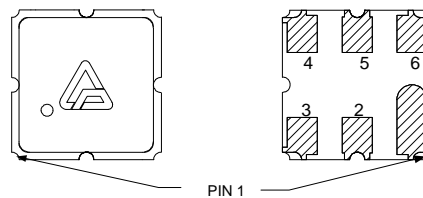
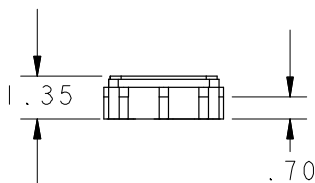


Wide Band Performance



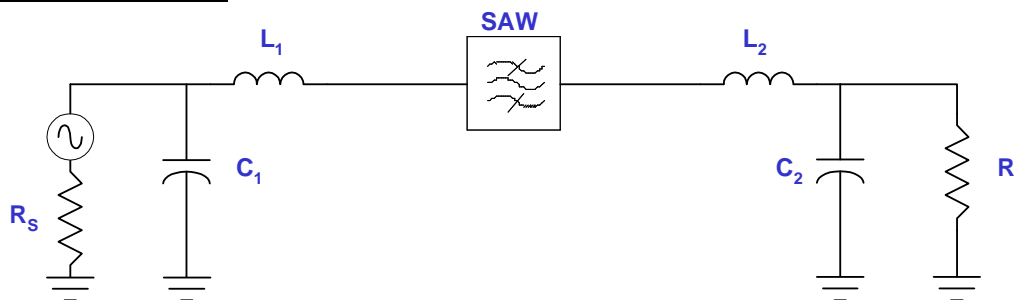
Package Outline

SAW PRODUCTS



Pin	Function
2	RF Input
5	RF Output
1,3,4,6	Ground

Matching Circuit



Single Ended Input	Single Ended Output
$R_s = 50 \Omega$	$R_L = 50 \Omega$
$L_1 = 3.9nH$	$L_2 = 3.9nH$
$C_1 = 3.3pF$	$C_2 = 3.3pF$

Note: Matching circuit is for COM DEV evaluation PCB. Matching circuit component value may be different on customer PCB.