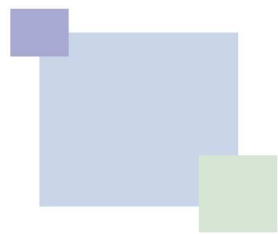


1234.4 MHz SAW Filter

188890-101

SAW PRODUCTS

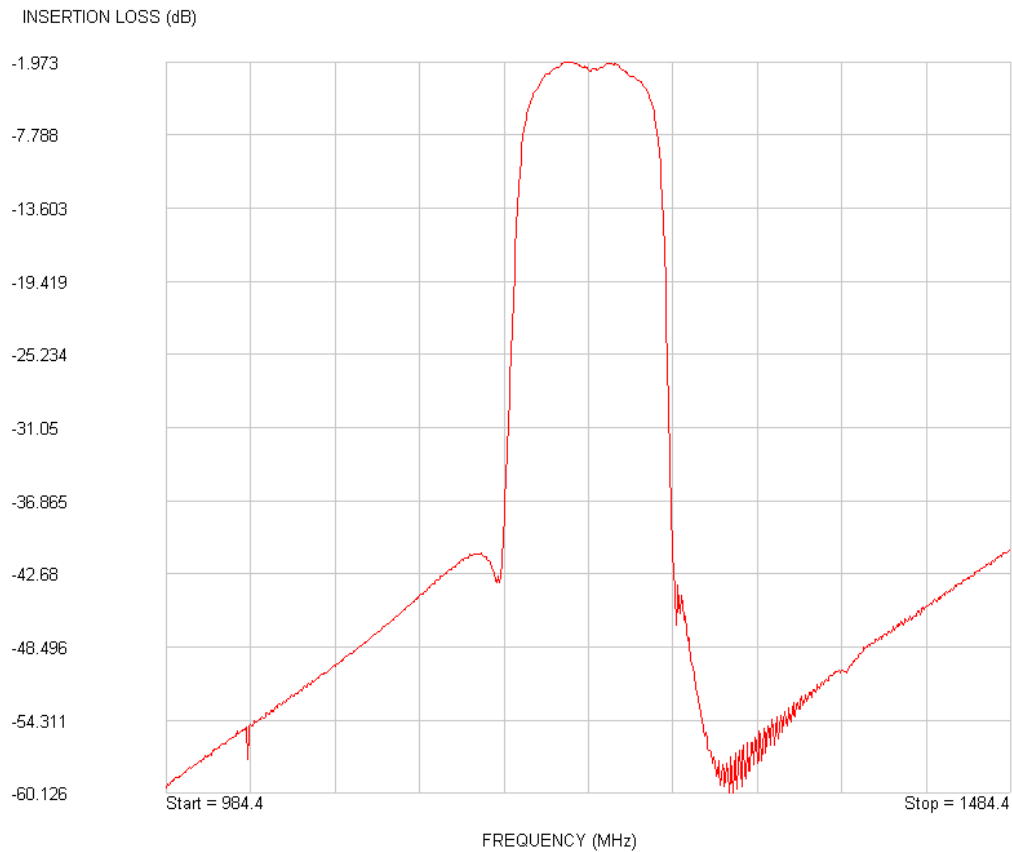
Parameter	Unit	Min	Typ	Max
Centre Frequency, f_o	MHz		1234.4	
Passband Insertion Loss, IL	dB		3.5	4.5
Passband 1.5dB bandwidth	MHz	45	58	
Amplitude Ripple	dB p-p		0.8	1.2
Out-Of-Band Attenuation				
10 – 1088MHz		45	50	
1088 – 1178MHz		36	41	
1297 – 1387MHz	dB	38	43	
1387 – 2000MHz		30	35	
2000 – 3000MHz		35	40	
Group Delay Ripple	ns p-p		14	25
Group Delay linearity	ns		5	15
Group Delay linearity matching	ns		2.5	10
Operating Temperature Range	°C	-40		85
Input Impedance (single ended)	Ω	50		
Output Impedance (single ended)	Ω	50		
Impedance Matching		See matching circuit detail		
Package	mm	SMT 3.8x3.8x1.3		

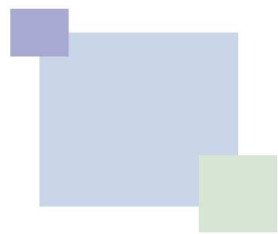


COM DEV

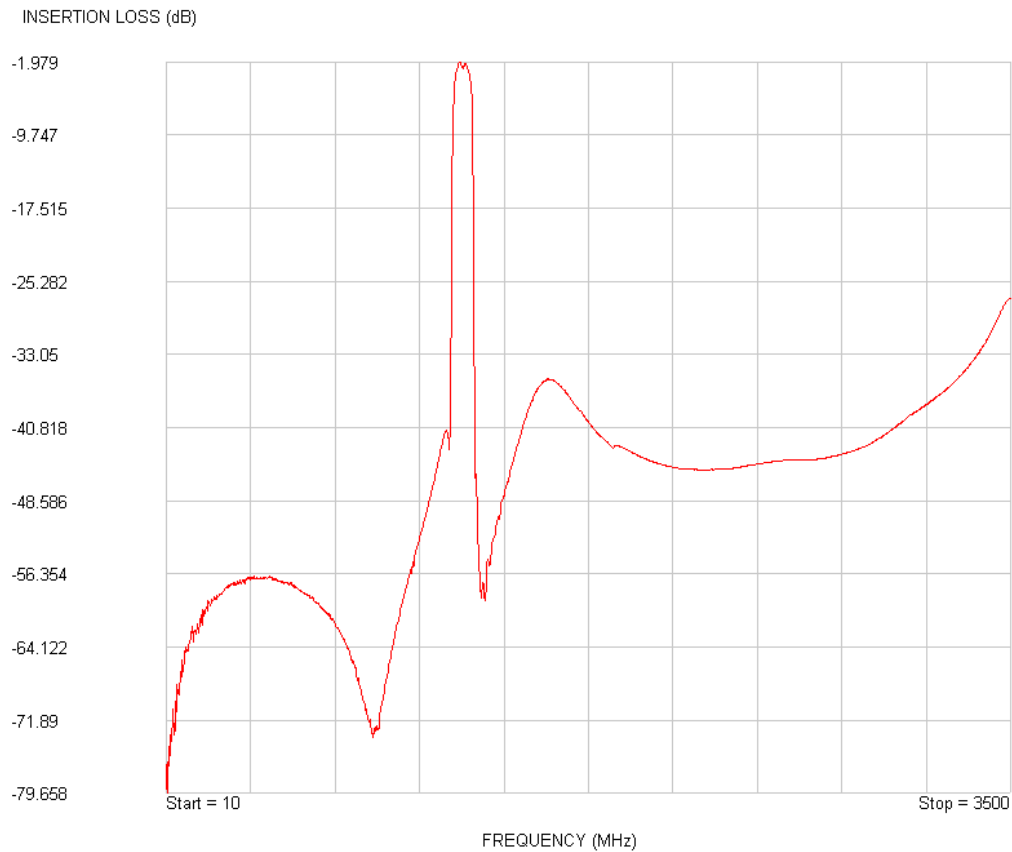
SAW PRODUCTS

Narrow Band Performance



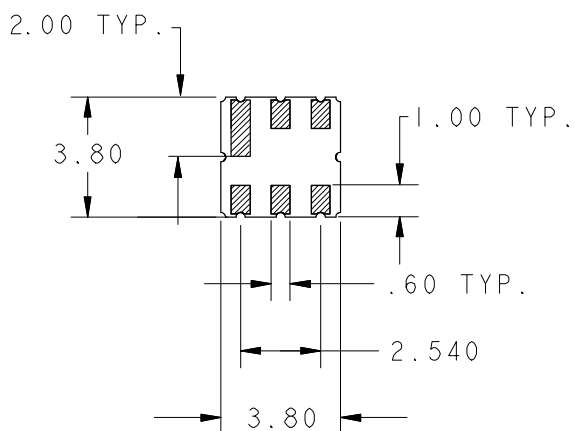
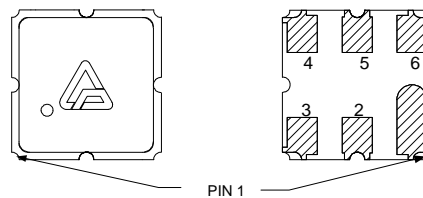
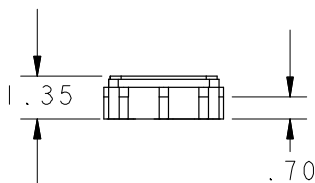


Wide Band Performance



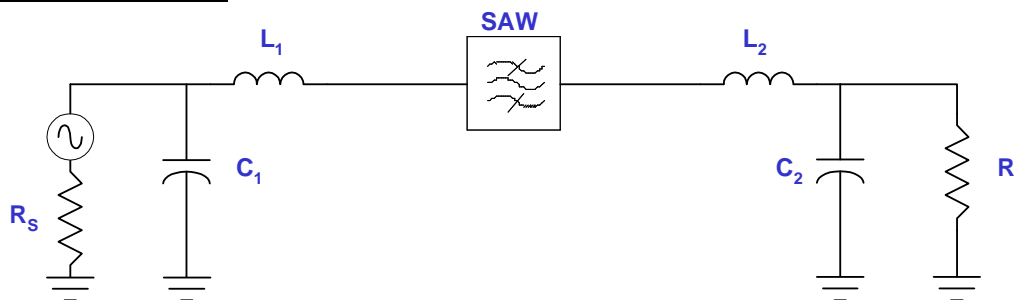
Package Outline

SAW PRODUCTS



Pin	Function
2	RF Input
5	RF Output
1,3,4,6	Ground

Matching Circuit



Single Ended Input	Single Ended Output
$R_s = 50 \Omega$	$R_L = 50 \Omega$
$L_1 = 4.5nH$	$L_2 = 4.5nH$
$C_1 = 3.3pF$	$C_2 = 3.3pF$

Note: Matching circuit is for COM DEV evaluation PCB. Matching circuit component value may be different on customer PCB.