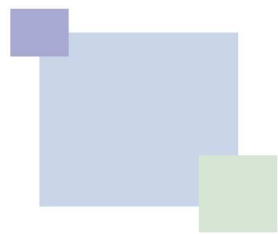


## 1587.1 MHz SAW Filter

188889-101

SAW PRODUCTS

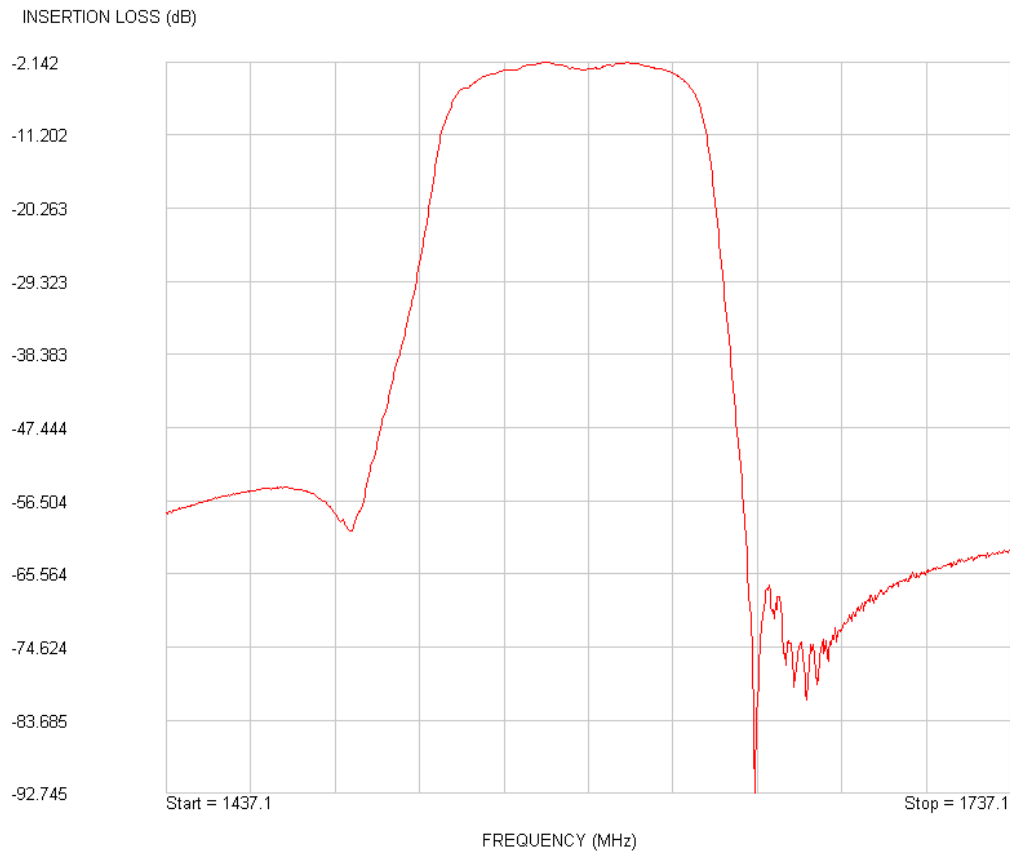
Parameter	Unit	Min	Typ	Max
Centre Frequency, $f_o$	MHz		1587.1	
Passband Insertion Loss, IL	dB		3.3	4.3
Passband 1.5dB bandwidth	MHz	55	65.5	
Amplitude Ripple	dB p-p		1.0	1.5
Out-Of-Band Attenuation				
10 – 1500MHz		45	53	
1500 – 1525MHz		25	30	
1653 – 1743MHz	dB	40	60	
1743 – 2500MHz		35	40	
2500 – 3500MHz		40	45	
Group Delay Ripple	ns p-p		14	25
Group Delay linearity	ns		5	15
Group Delay linearity matching	ns		2.5	10
Operating Temperature Range	°C	-40		85
Input Impedance (single ended)	$\Omega$	50		
Output Impedance (single ended)	$\Omega$	50		
Impedance Matching		See matching circuit detail		
Package	mm	SMT 3x3X1.3		

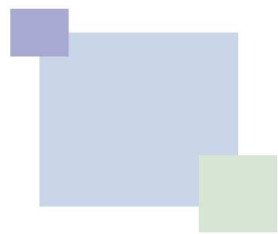


COM DEV

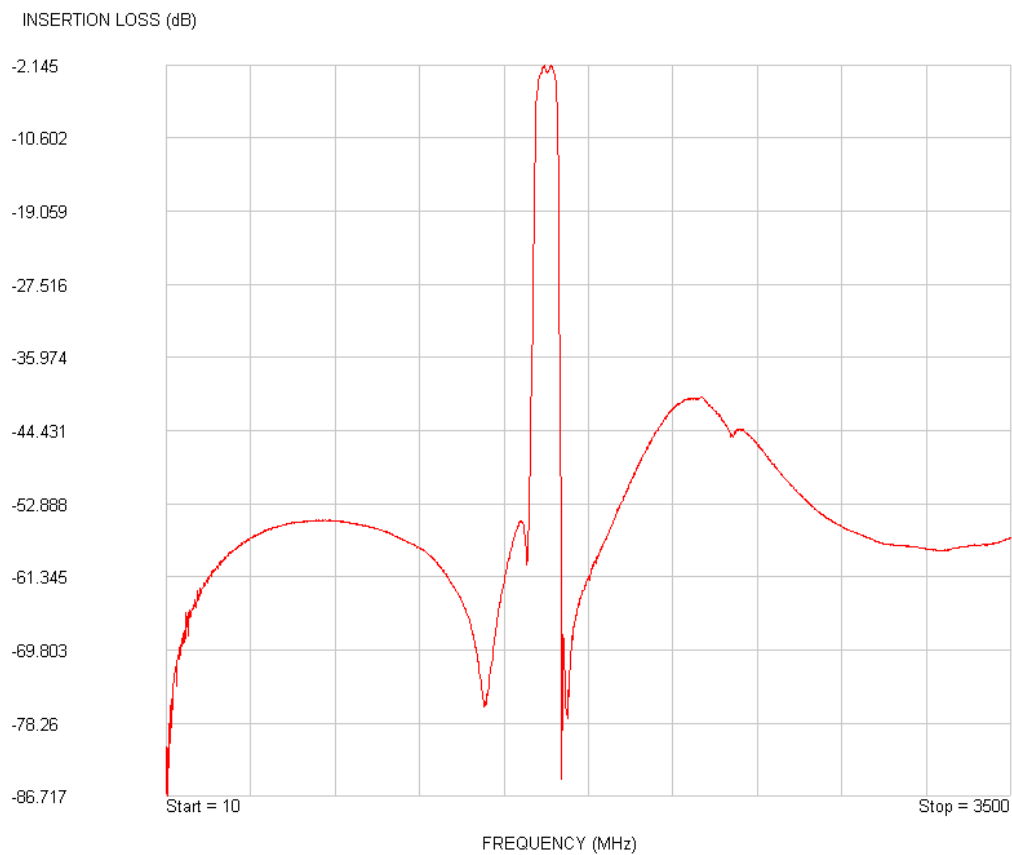
SAW PRODUCTS

### Narrow Band Performance



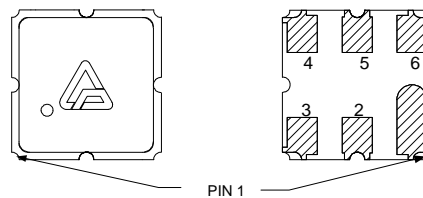
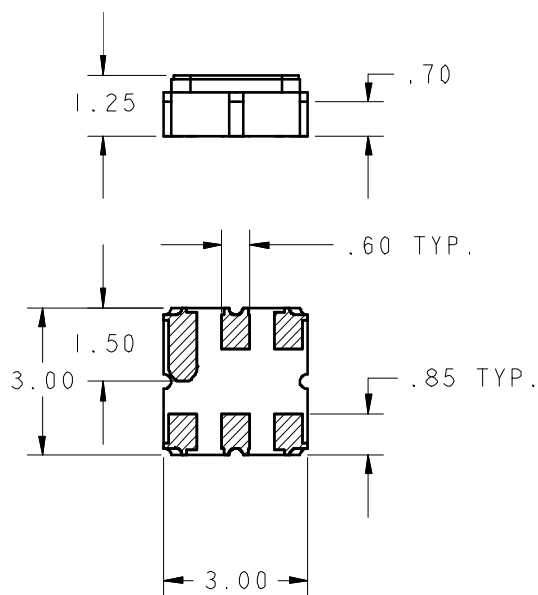


### Wide Band Performance



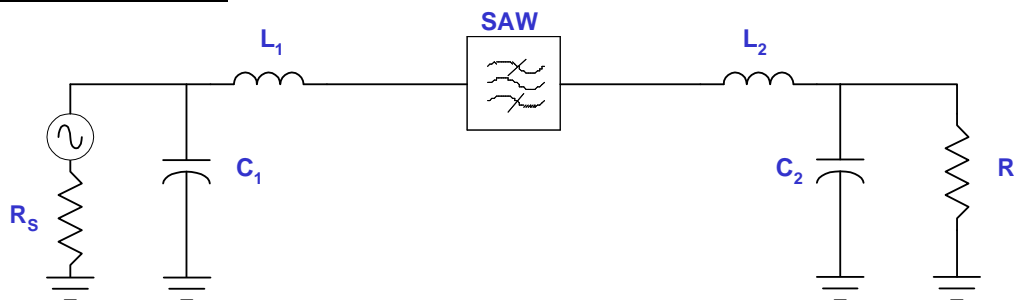
## Package Outline

SAW PRODUCTS



Pin	Function
2	RF Input
5	RF Output
1,3,4,6	Ground

### Matching Circuit



Single Ended Input	Single Ended Output
$R_s = 50 \Omega$	$R_L = 50 \Omega$
$L_1 = 2.6nH$	$L_2 = 2.6nH$
$C_1 = 2.1pF$	$C_2 = 2.1pF$

Note: Matching circuit is for COM DEV evaluation PCB. Matching circuit component value may be different on customer PCB.